

MODULIGHTOR - Configured to your specification

The Milam Chandelier

FINISHES

White
Black
Brushed Chrome
Polished Chrome
Brushed Nickel
Polished Nickel
Bronze Powder Coat "Flat"
Brushed Gold
Polished Gold

MOUNTING METHODS

The most typically specified mounting MM01B (suspended by stems, and hardwired through a stem—with No screws visible) –

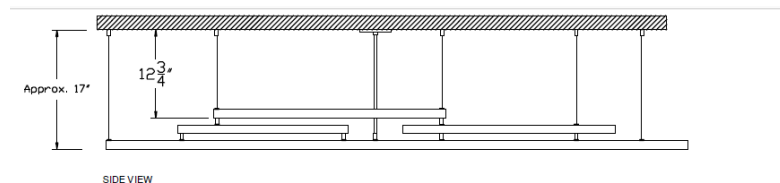
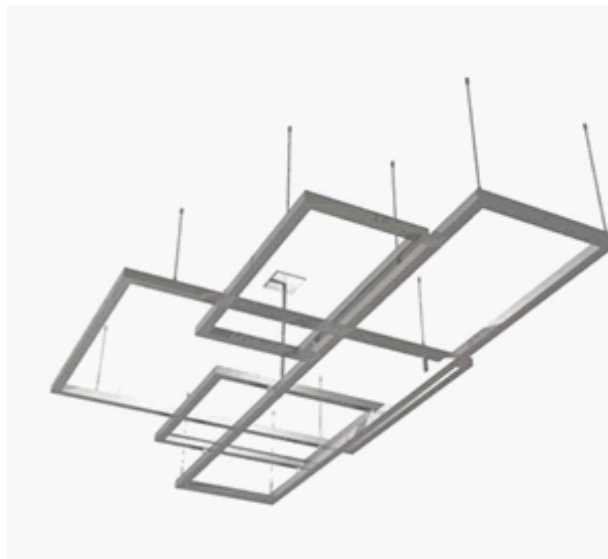
LAMPS

LED Lamps - 2700K or 3000K
5 W - 600 Lumens (50w equivalent)
6 W - 720 Lumens (75w equivalent)
90 CRI (color rendering index)
DC Bayonet (close to zero UV) 120V
Dimmable - ETL Listed

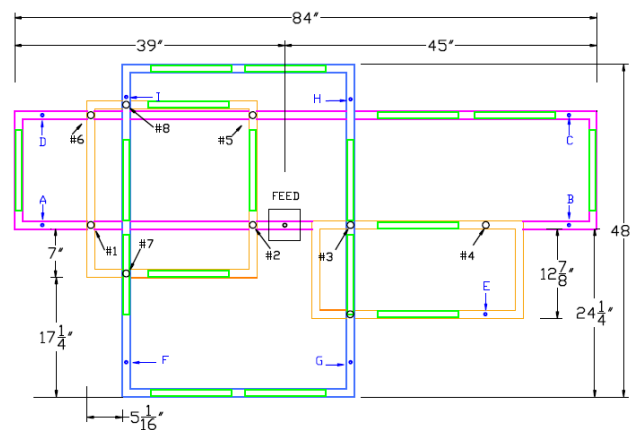
LED Board - 2700K or 3000K
120 Volts
12 W 1440 Lumens
95 CRI (color rendering index)
Dimmable - ETL Listed

JD Krypton Lamps (Blocks UV)
120 Volts
20, 40, 60 Watts
Dimmable - ETL Listed

JD Halogen
130 Volts
50, 75 Watts
Dimmable - ETL Listed



SIDE VIEW



The Milam Chandelier

Fully configurable chandeliers in scale, light output and finish

Minilux SQ—approximately "SQuare" extrusion shape

Can be made in custom or multiple configurations

No transformer or driver necessary

Dimmable

ETL Approved to meet UL Standards